

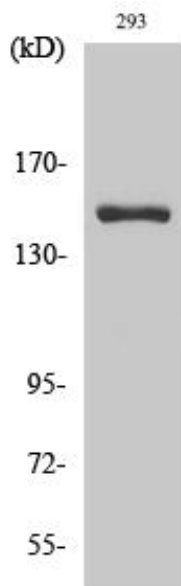


ANKRD30A Polyclonal Antibody

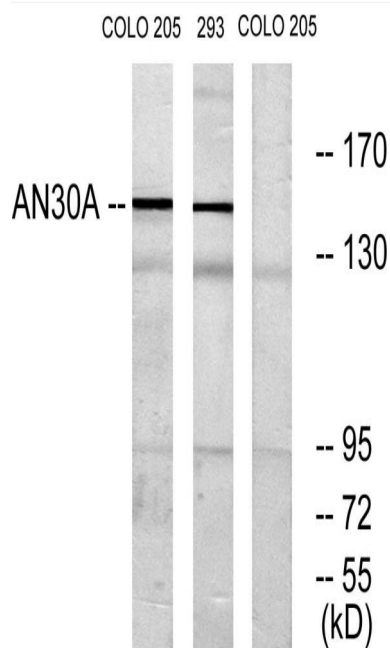
| | |
|----------------------------------|--|
| Catalog No | YP-Ab-03700 |
| Isotype | IgG |
| Reactivity | Human;Rat;Mouse; |
| Applications | WB;IHC;IF;ELISA |
| Gene Name | ANKRD30A |
| Protein Name | Ankyrin repeat domain-containing protein 30A |
| Immunogen | The antiserum was produced against synthesized peptide derived from human AN30A. AA range:1041-1090 |
| Specificity | ANKRD30A Polyclonal Antibody detects endogenous levels of ANKRD30A protein. |
| Formulation | Liquid in PBS containing 50% glycerol, 0.5% BSA and 0.02% sodium azide. |
| Source | Polyclonal, Rabbit,IgG |
| Purification | The antibody was affinity-purified from rabbit antiserum by affinity-chromatography using epitope-specific immunogen. |
| Dilution | WB: 1/500 - 1/2000. IHC: 1/100 - 1/300. ELISA: 1/5000.. IF 1:50-200 |
| Concentration | 1 mg/ml |
| Purity | ≥90% |
| Storage Stability | -20°C/1 year |
| Synonyms | ANKRD30A; Ankyrin repeat domain-containing protein 30A; Serologically defined breast cancer antigen NY-BR-1 |
| Observed Band | 153kD |
| Cell Pathway | nucleus, |
| Tissue Specificity | Mainly expressed in breast and testis. A very faint signal is detected in placenta. Also expressed in many breast cancer cells. |
| Function | similarity:Contains 6 ANK repeats.,tissue specificity:Mainly expressed in breast and testis. A very faint signal is detected in placenta. Also expressed in many breast cancer cells., |
| Background | similarity:Contains 6 ANK repeats.,tissue specificity:Mainly expressed in breast and testis. A very faint signal is detected in placenta. Also expressed in many breast cancer cells., |
| matters needing attention | Avoid repeated freezing and thawing! |
| Usage suggestions | This product can be used in immunological reaction related experiments. For more information, please consult technical personnel. |



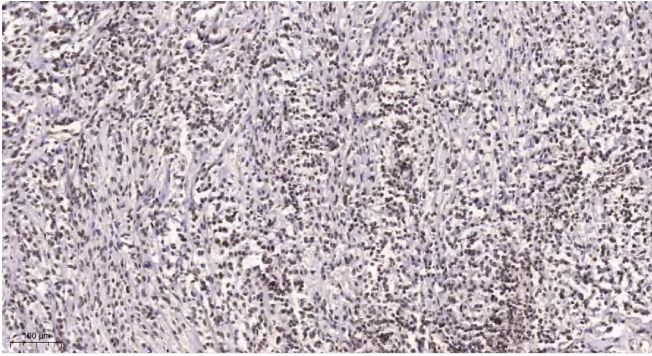
Products Images



Western Blot analysis of various cells using ANKRD30A Polyclonal Antibody diluted at 1:2000 cells nucleus extracted by Minute TM Cytoplasmic and Nuclear Fractionation kit (SC-003, Inventbiotech, MN, USA).



Western blot analysis of lysates from 293 and COLO cells, using AN30A Antibody. The lane on the right is blocked with the synthesized peptide.



Immunohistochemical analysis of paraffin-embedded human Small intestinal stromal tumor. 1, Tris-EDTA,pH9.0 was used for antigen retrieval. 2 Antibody was diluted at 1:200(4° overnight.3,Secondary antibody was diluted at 1:200(room temperature, 45min).